

# TABLE ALPHA



*Anatomage*

## What is the Table Alpha?

### Anatamage Table Alpha

Anatamage Table Alpha is the solution for advanced high school anatomy and biology education. Stemming from the world renowned Anatamage Table, the Alpha offers the same interactive dissection experience to explore real human and animal anatomy, now at a budget-friendly price.

High school students receive higher level education with the same quality and features used in major medical schools and hospitals including: Stanford University, Case Western University, Mayo Clinic and Imperial College London. Table Alpha provides high school instructors the resources to prepare students for their future.

Table Alpha features unparalleled accuracy with data from real human and animal scans. Utilizing a touch interactive screen and sophisticated 3D visualization software, high school students can virtually dissect the cadaver layer-by-layer, structure-by-structure. Table Alpha provides effective anatomy education without the need to sacrifice live animals.



## Why the Table Alpha?

### Replace or Supplement Animal Dissection

High school education predominantly focuses on animal science lab, with animals being a stand-in to learning human anatomy. Table Alpha bridges the gap by providing teachers the opportunity to connect the concepts learned in animal anatomy with those in human anatomy. With a variety of animal cases available, students are encouraged to explore the other scans and foster their interest in biology and other sciences.

### College Ready Education

Expose high school students to college-level education early for a smooth transition. Top-tier institutions worldwide integrate the Anatamage Table into their teaching curriculum with proven results. A study from the University of Nebraska Medical Center showed 96% of students felt that the Anatamage Table was advantageous to their learning, while the 2014 student group showed a significant improvement in exam scores. Table Alpha's contents and features are sure to deliver similarly effective results to your program.

### Budget-Friendly

Table Alpha is cost effective, made from off the shelf hardware, while providing the same software content and features as the acclaimed Anatamage Table.

### Set Your Teaching to a Higher Standard

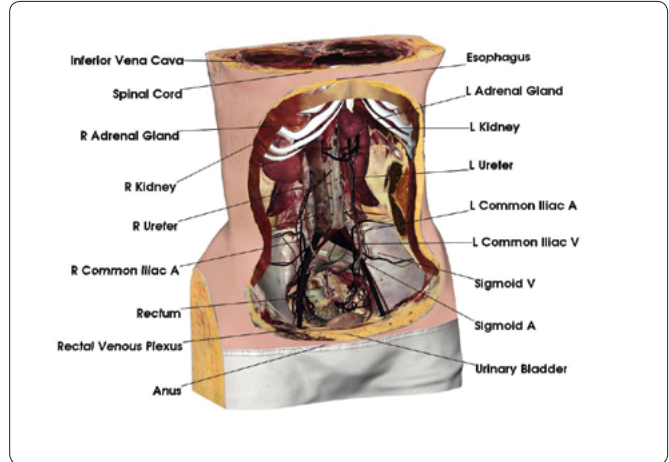
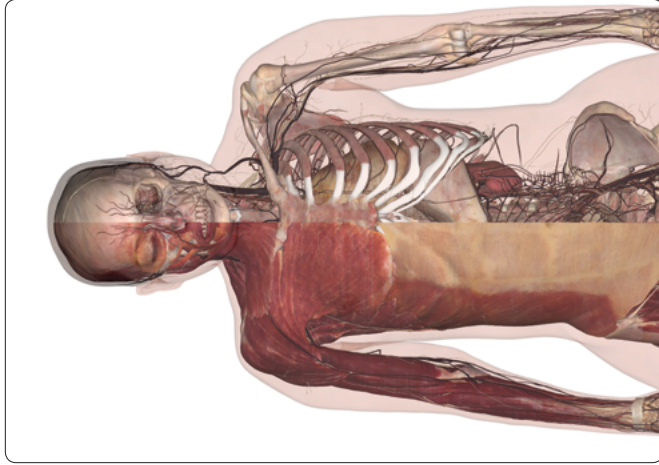
Table Alpha will be the technological focal point of your institutions. Impress students, teachers, and parents with Table Alpha as the system that drives student engagement and success.



# Anatmage Table Alpha Features and Contents

## 3D & Touch Interactive

Table Alpha features full high-resolution 3D animal and cadaver cases that can be interacted via touch. With their fingers, users can rotate the virtual body and cut in any direction.



## Virtual Dissection

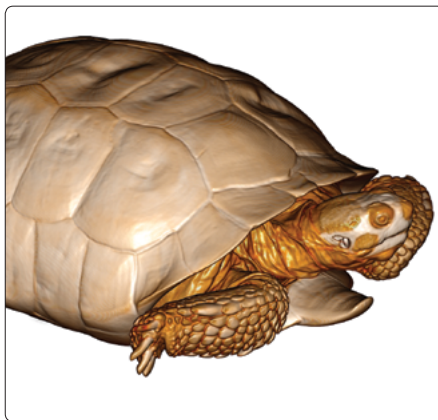
The Freehand Dissection Tool enables users to make incisions in any way or shape anywhere on the cadaver and remove structures layer-by-layer. By using the Freehand Dissection Tool, instructors can simulate surgical cuts and provide a more dynamic teaching environment.

## Real Human and Animal Cases

Table Alpha comes with both full body male and female gross anatomy at 0.8mm resolution. The images are from non-chemically treated cadavers with color and shape preserved. Also, with over a dozen animal scans included in Table Alpha, students and instructors can also dissect and teach animal cases. With all these cases, teaching animal anatomy or comparative anatomy becomes simple.

## Annotated and Curriculum Ready

Over 2,300 anatomical structures are fully annotated for both male and female cadavers. Users can remove single structures with the touch of a finger and get the name of structures at the same time. Users can locate specific structures from an intuitive categorized lists of systems, making Table Alpha an efficient anatomical reference solution.



## The Anatomage Table Alpha Components



Product image for illustration purposes only. Actual product may vary.

Display	High Definition display (42" or similar) with Multi Touch-interactivity
Hardware	Angled Monitor Stand External USB and Video Outputs
Computer	Custom Workstation with High Performance Graphics
Software	Anatomage Table 4.0 Volumetric Visualization Linear and Freehand Dissection Annotations and Quiz Mode Layer by Layer Structure Navigation
Contents	Real Human and Animal Anatomy Full Body Male and Female Cadavers Animal and Human Case Examples

## The Anatomage Table

The original Anatomage Table revolutionized anatomy education, changing the way students learn and instructors teach. The Table has been adopted by hundreds of medical schools worldwide, highly reviewed, and featured regularly in the media as an innovative technology solution. The Table is used in anatomy education, forensic research, clinical review, surgical planning, and even as a technology center piece in museums. With countless applications, the Table continues to be the preferred solution which pushes the bounds of medical education.



Top: Anatomage Table Bottom: Anatomage Table Convertible

Display	High Definition Full Body Visualization with Multi Touch-Interactivity
Hardware	Custom Frame and Tempered Glass Overlay External USB and Video Outputs
Computer	Custom Workstation with High Performance Graphics
Software	Anatomage Table 4.0 Volumetric Visualization Linear and Freehand Dissection Annotations and Quiz Mode Layer by Layer Structure Navigation
Contents	Real Human and Animal Anatomy Full Body Male and Female Cadavers Animal and Human Case Examples Regional Scans Pathological/Clinical Examples