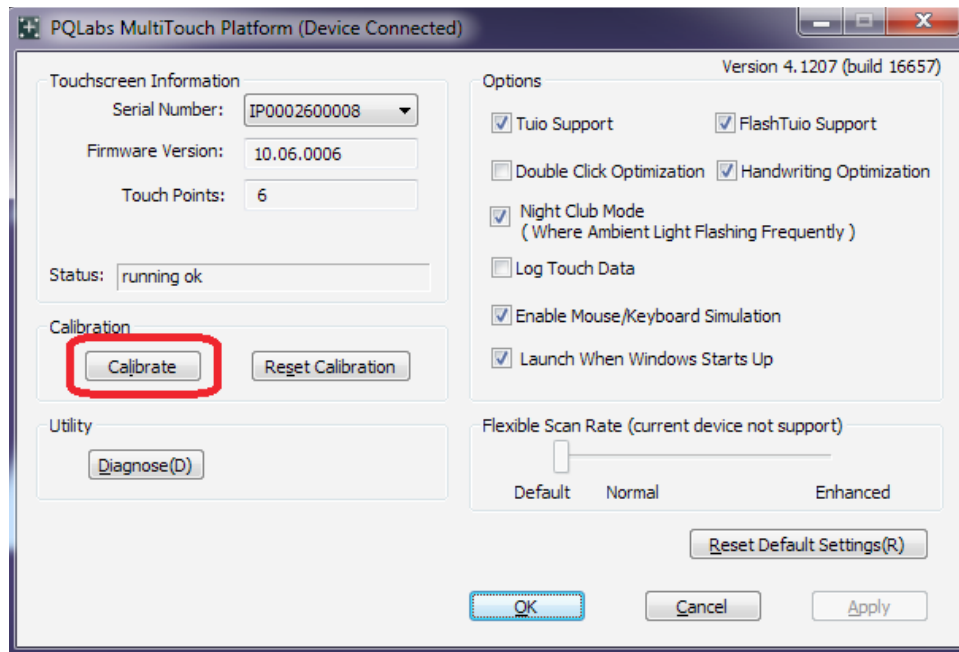


How to Calibrate the Touchscreen

Performing a simple calibration

The following steps are for routine recalibration of the touchscreen. It is recommended to use a USB keyboard and a mouse during the calibration process. This how to document is written for Version 4.1305 of the calibration software. For questions, please contact your local distributor or the Anatomage Support Department.

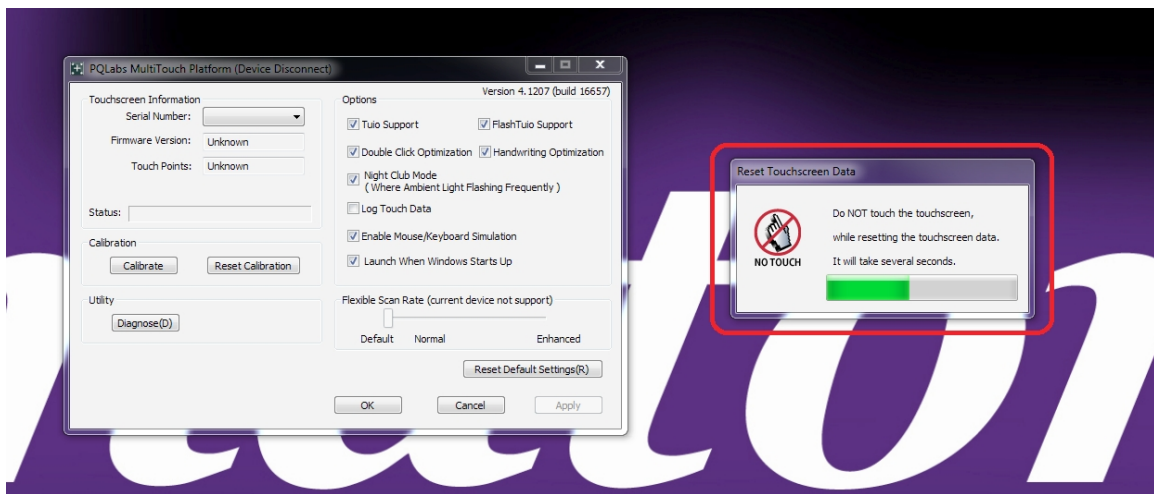
Step 1: Open the Calibration Software (icon located on the desktop) and select **Calibrate** from the window.



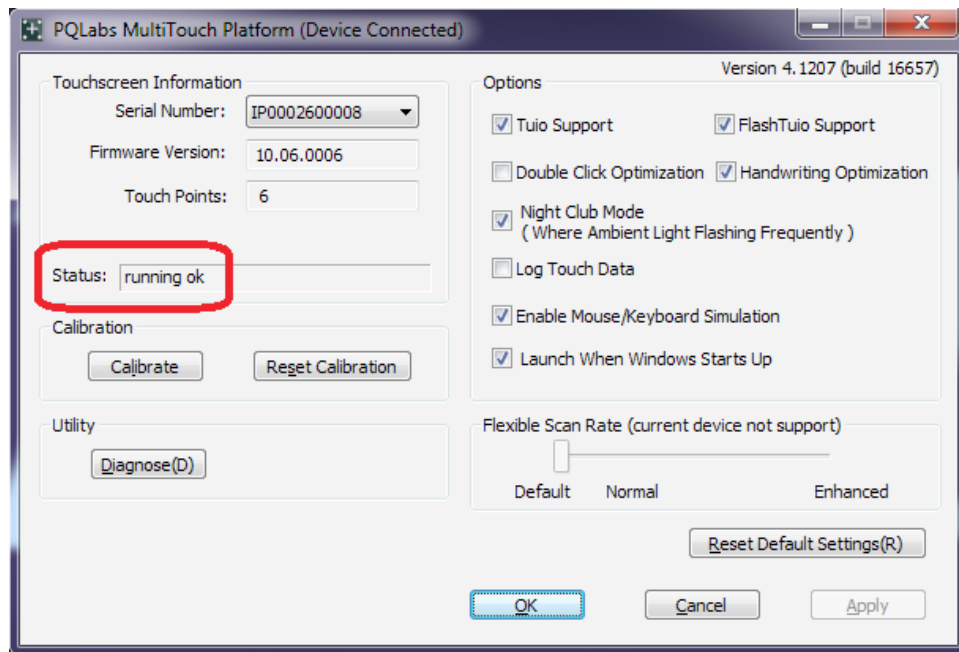
Step 2: Press and hold your finger at the center of each flashing cross-hair for one second. Repeat for all four cross-hairs.



Step 3: When completed, the software will reset the touchscreen data and finish calibrating the touchscreen with the display. Please do not touch the screen until the application has finished calibrating.



Step 4: Confirm that the device is connected and the Status displays *running ok*. Close the calibration software.



Step 5: Make sure touch recognition at the edge of the Table is accurate. If not, repeat Calibration.

End of How to Document.