

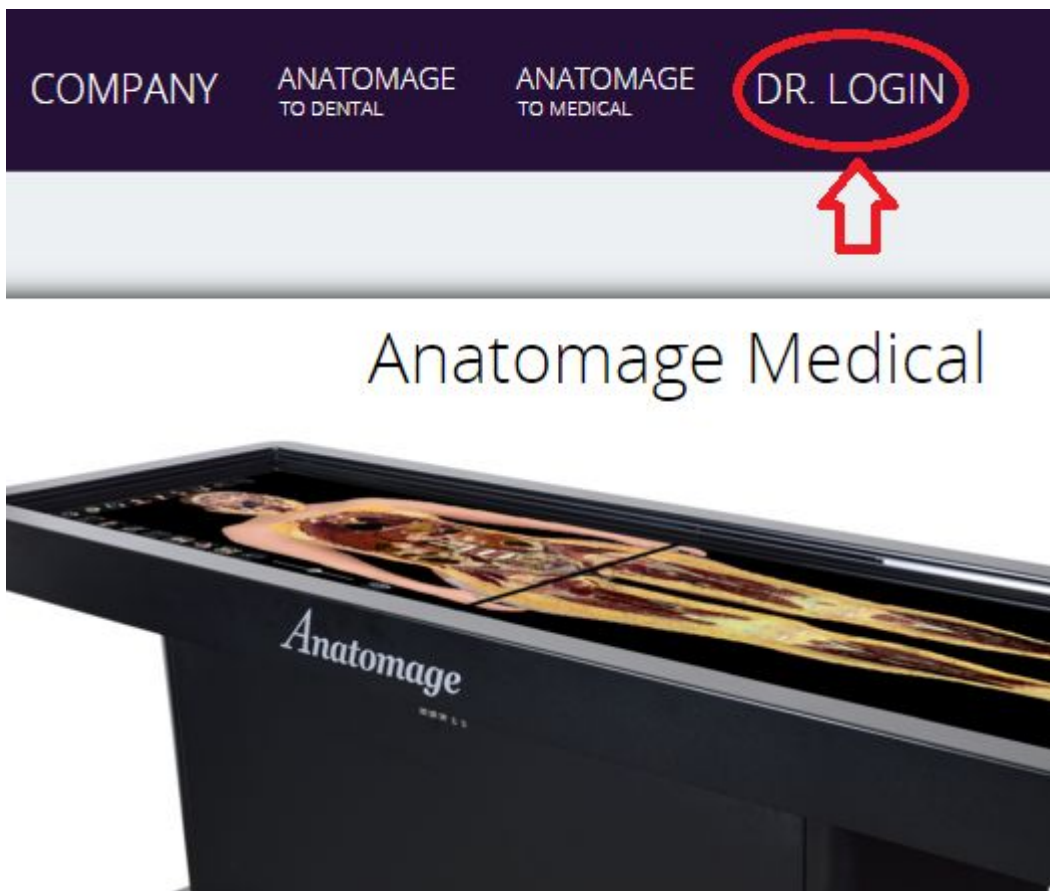
Updating Table EDU 4.0 Presets

Anatomage has created new projections presets for many of the High Resolution data sets. These instructions will guide you through replacing the current default preset files with the new preset files. The new preset files have both the original TableEDU4.0 default presets as well as the new projections presets.

1) Open an Internet browser on the Table and navigate to **anatomage.com**

2) At the Anatomage website, use the “**DR. LOGIN**” link to access the download server.

For log-in information, please contact Samantha Chester (samantha.chester@anatomage.com)



3) After logging in, your browser should automatically navigate to a list of downloads. Select **“Prosecution Presets (1 of 2)”**

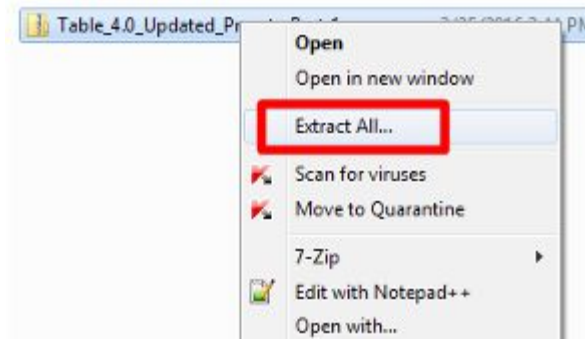
Case No	Patient Name	Case Type
102576	Prosecution Presets (1 of 2)	Collection
102574	Prosecution Presets (2 of 2)	Collection

4) Select **“Save File”** to download the zip file onto your Table.

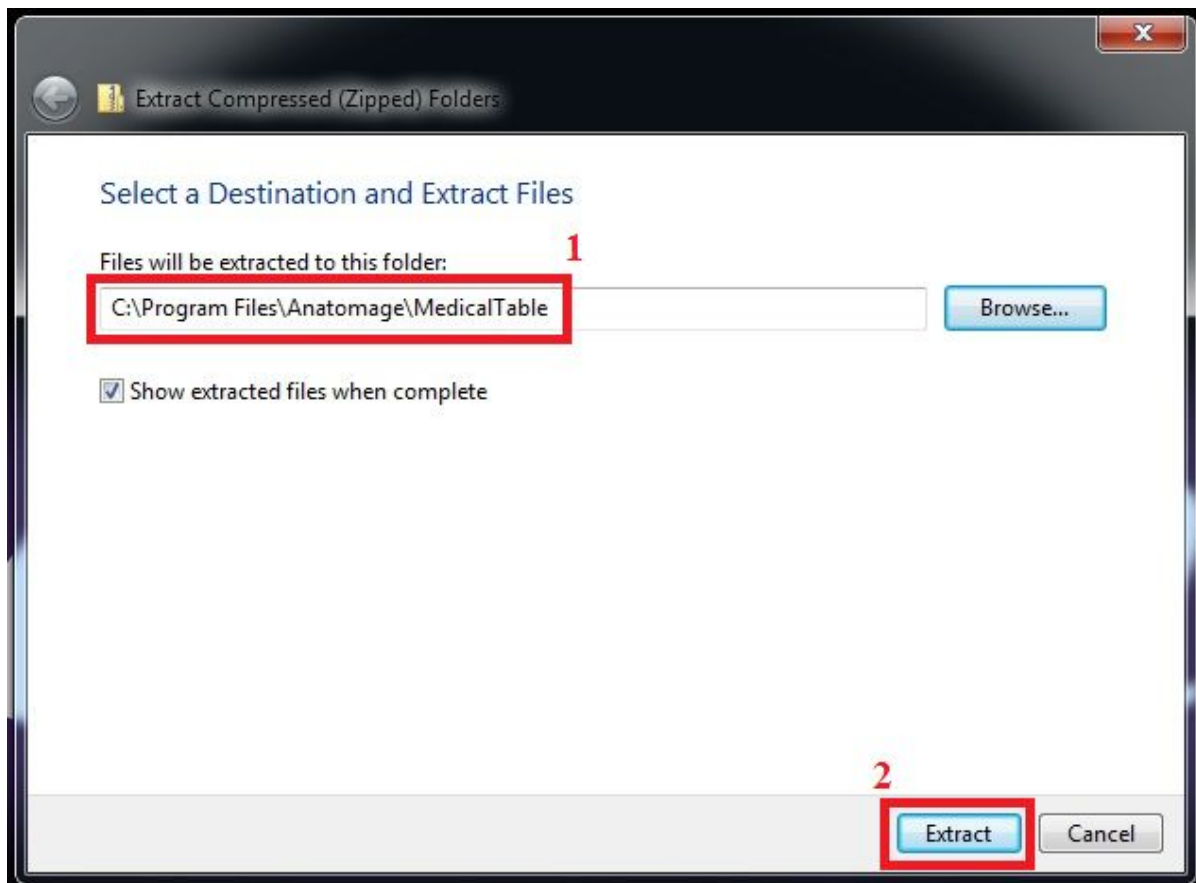
5) Repeat Steps 3 and 4 for **“Prosecution Presets (2 of 2)”** file.

6) Navigate to the folder containing the **Table_4.0_Updated_Presets_Part_1.zip**. (Usually in **C:\Users\Table\Downloads**)

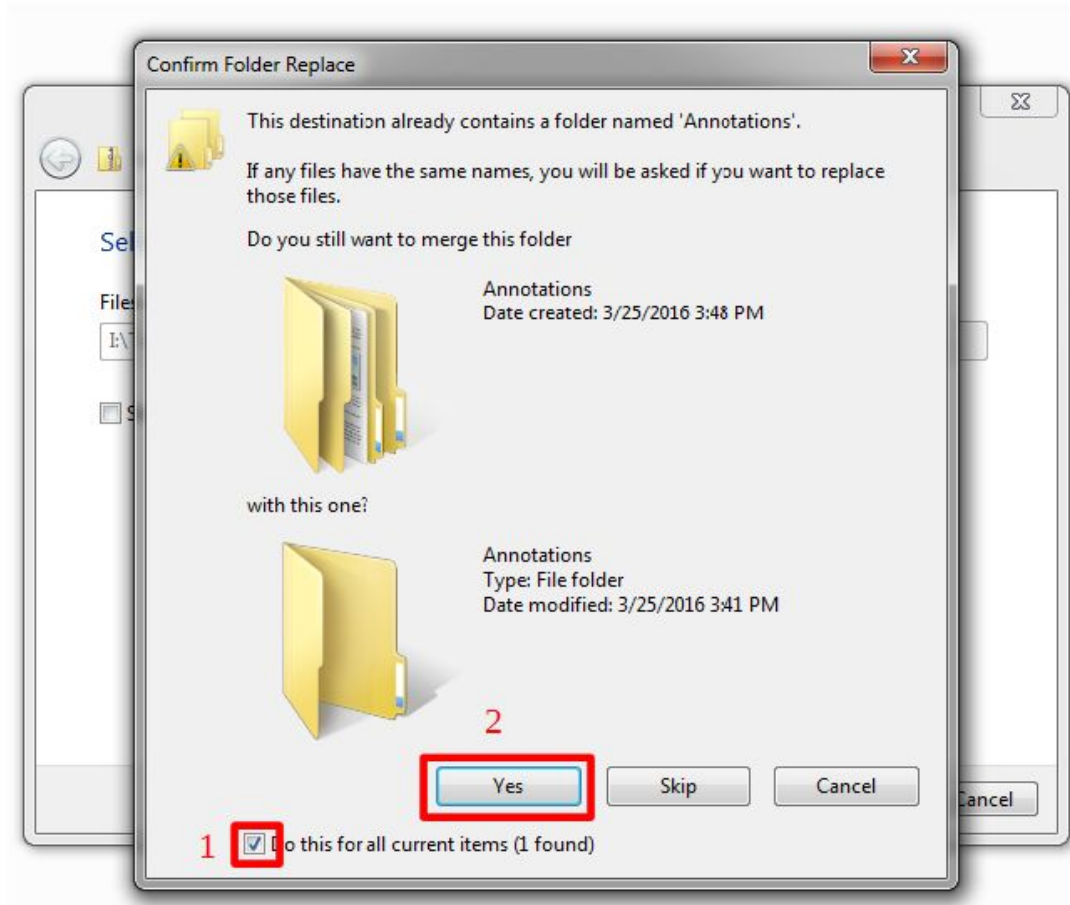
7) Right-click on the zip file and select “**Extract All**”



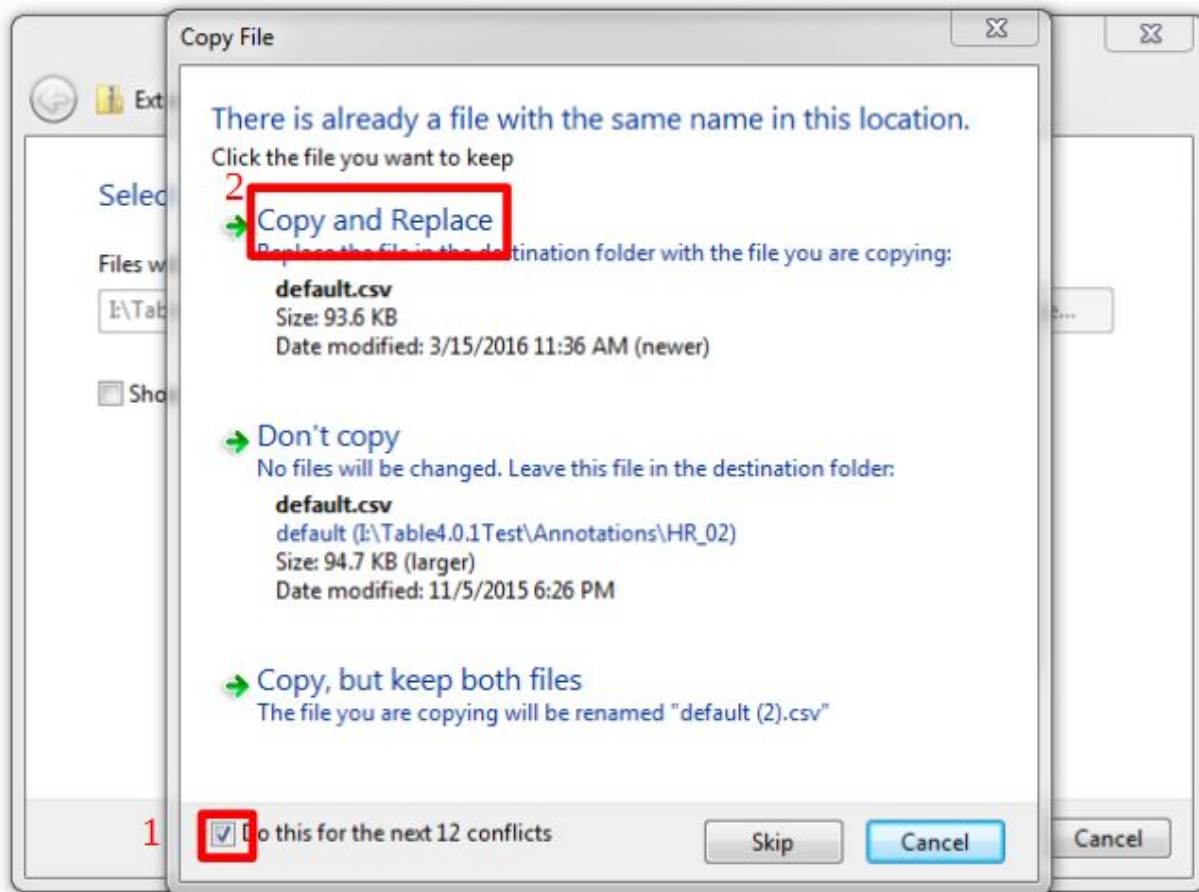
8) Specify the following file path for extraction: **C:\Program Files\Anatamage\MedicalTable**
Then select “**Extract**”.



9) When prompted by Windows, select **“Do this for the next X conflicts”** at the bottom left. Then select **“Yes”**.

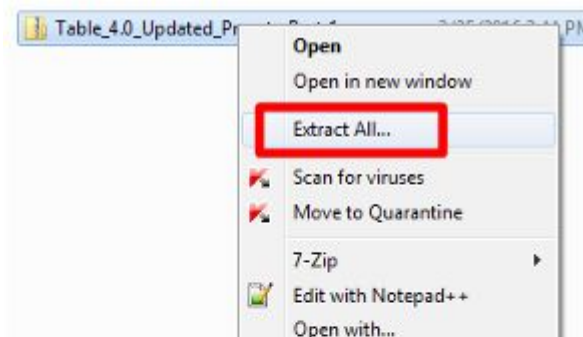


10) When prompted again by Windows, select “**Do this for the next X conflicts**” at the bottom left. Then select “**Copy and Replace**”.



11) Navigate to the folder containing the **Table_4.0_Updated_Presets_Part_2.zip**. (Usually in **C:\Users\Table\Downloads**)

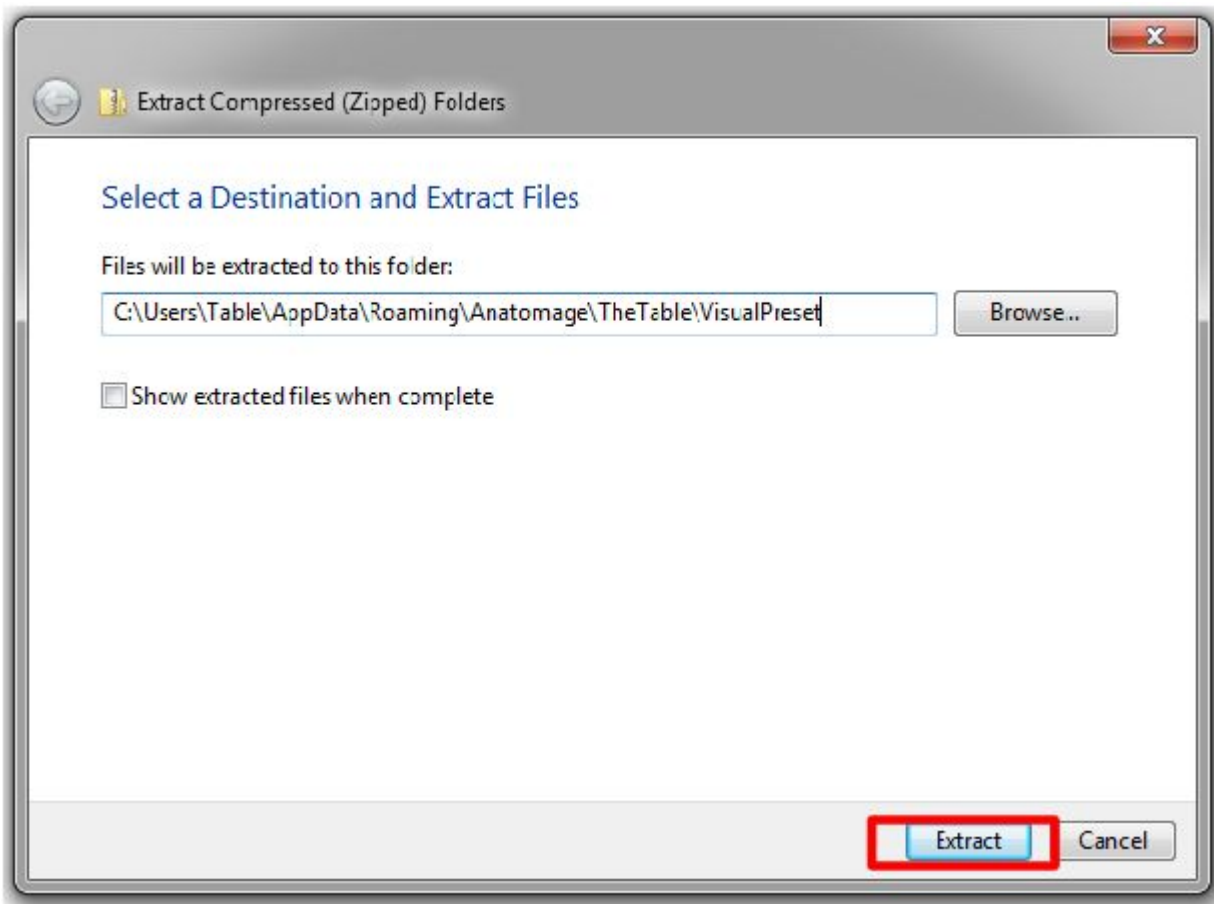
12) Right-click on the zip file and select “**Extract All**”



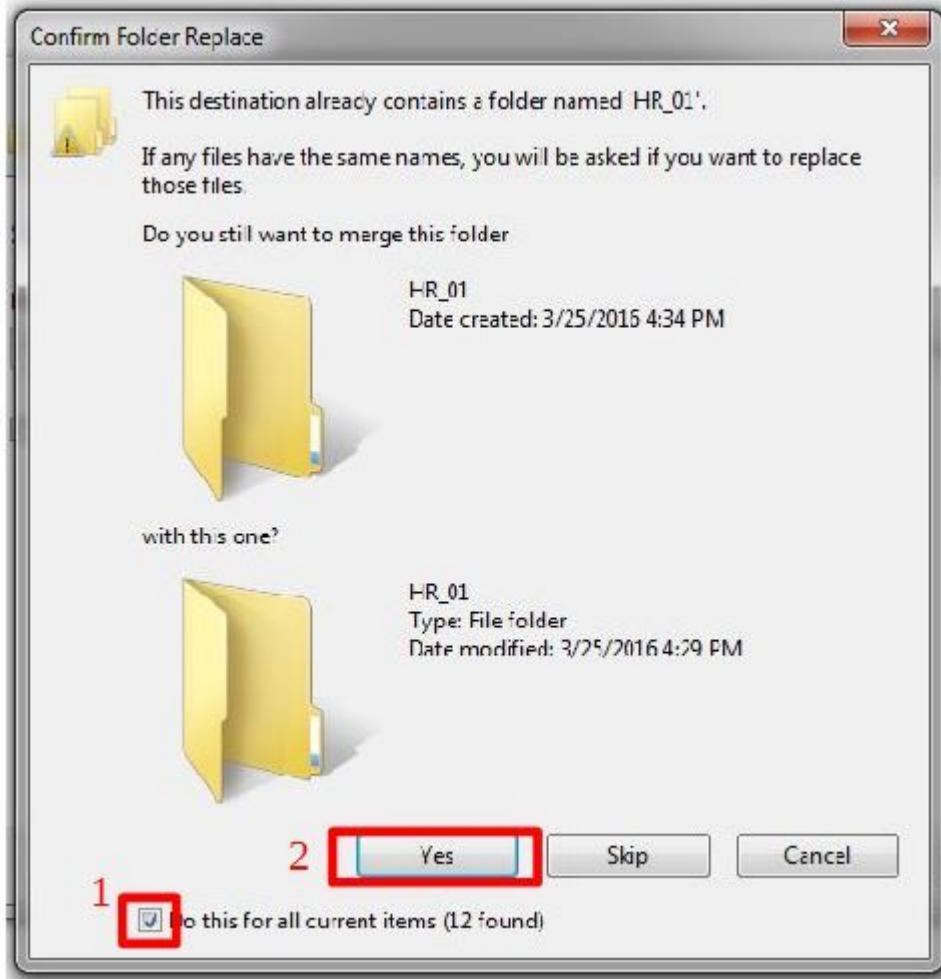
13) Specify the following file path for extraction:

C:\Users\Table\AppData\Roaming\Anatomage\TheTable\VisualPreset

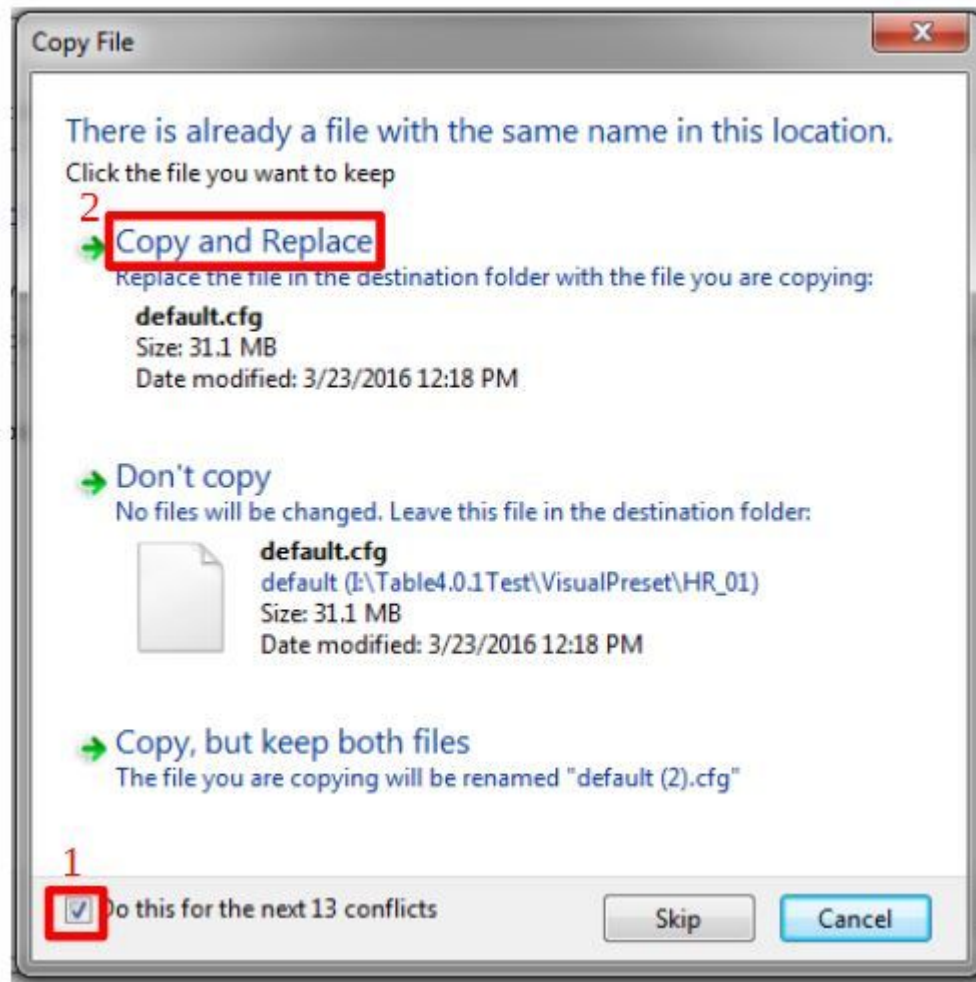
Then select “**Extract**”.



14) When prompted by Windows, select “**Do this for the next X conflicts**” at the bottom left. Then select “**Yes**”.



15) When prompted again by Windows, select “**Do this for the next X conflicts**” at the bottom left. Then select “**Copy and Replace**”.



This concludes the updating preset process